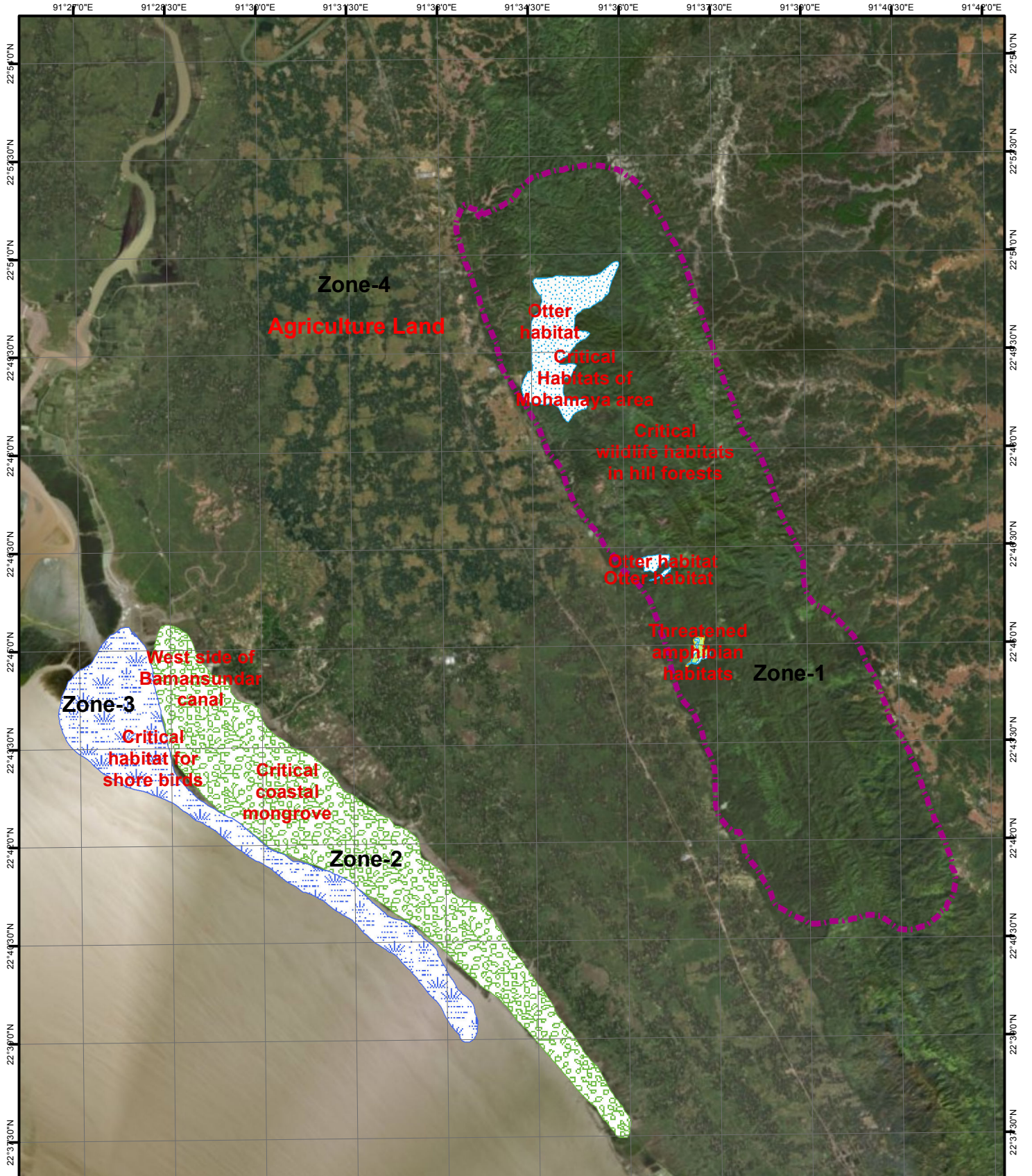


ZONING FOR FLORA AND FAUNA IN MIRSORAI UPAZILA



Legend

-  Critical coastal mangrove
-  Critical habitat for shore birds
-  Critical wildlife habitats in hill forests
-  Otter habitat
-  Threatened amphibian habitats



PREPARATION OF DEVELOPMENT PLAN FOR MIRSHARAI UPAZILLA

Government of the People's Republic of Bangladesh
Ministry of Housing and Public Works
Urban Development Directorate (UDD)

Engineering Consultants and Associates Ltd.

22°34'30"N
22°33'30"N
22°32'30"N
22°31'30"N
22°30'30"N
22°29'30"N
22°28'30"N
22°27'30"N
22°26'30"N
22°25'30"N
22°24'30"N
22°23'30"N
22°22'30"N
22°21'30"N
22°20'30"N
22°19'30"N
22°18'30"N
22°17'30"N
22°16'30"N
22°15'30"N
22°14'30"N
22°13'30"N
22°12'30"N
22°11'30"N
22°10'30"N
22°9'30"N
22°8'30"N
22°7'30"N
22°6'30"N
22°5'30"N
22°4'30"N
22°3'30"N
22°2'30"N
22°1'30"N
22°0'30"N

91°21'0"E
91°20'0"E
91°19'0"E
91°18'0"E
91°17'0"E
91°16'0"E
91°15'0"E
91°14'0"E
91°13'0"E
91°12'0"E
91°11'0"E
91°10'0"E
91°9'0"E
91°8'0"E
91°7'0"E
91°6'0"E
91°5'0"E
91°4'0"E
91°3'0"E
91°2'0"E
91°1'0"E
91°0'0"E